

Theme 5 – Lesson 21



Robust Vocabulary

“Antarctic Ice”

Conserved



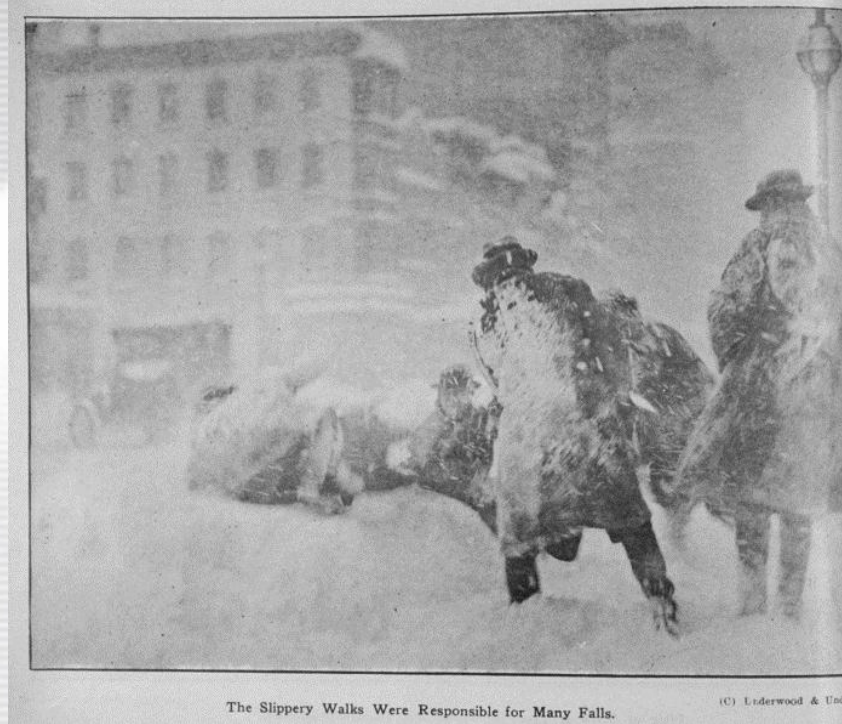
If something is rare and important, it should be conserved, or kept carefully.

Strict



If you are stern and demand obedience, you are strict.

Harsh



If something is hard to stand up to, like a blizzard, it is harsh.

Bleak



If something is cold and gloomy, it is bleak.

Absence



An absence means that something or someone is not present.

Shelters



Something that shelters you protects you and keeps you safe.

Permanently



If something stays one way forever, it stays that way permanently.

Drifts



When something drifts, it moves along without direction.

Scarce



Something is scarce if there is not much of it to be found.

Dim



It is dim when there is not much light.